



Ci200.3QT

Information Sheet



Sometimes custom installation needs something extra special and KEF's Ci200.3QT is just that. Easily configured for infrared remote control an integral DC motor allows you to position the speaker at the optimum angle with the press of a button. When fully retracted it can be operated as a conventional ceiling flush mounted speaker. Providing the perfect sound stage is KEF's patented Uni-Q® driver array producing audiophile quality sound with an expansive soundscape and excellent bass extension.

When partnering with others in the range such as the Ci130DS it is the perfect companion for creating a high performance built-in home theatre.

Features and Benefits:

The new Ci200.3QT features quiet motor control, with five pre-set positions, allowing the installer to direct the Uni-Q towards the listener.

All the new Ci200.3 models feature a new UniQ array, with a new 25mm (1") aluminium dome high frequency unit mounted coincidentally into a new 200mm (8") polypropylene bass/mid range unit.

The Uni-Q array combined with a new crossover design provides the new Ci200.3 models with superb off-axis dispersion characteristics.

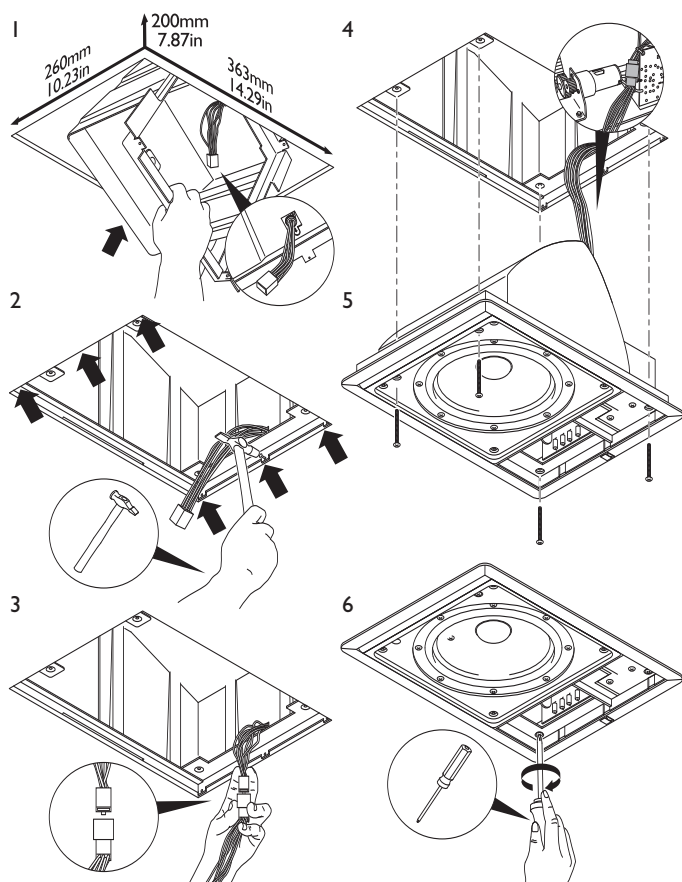
The bezel and contemporary grille design of the new Ci200.3 models can be painted to match the interior décor, making the finished installation less intrusive than it's predecessor.

Ci series
custom installation speakers



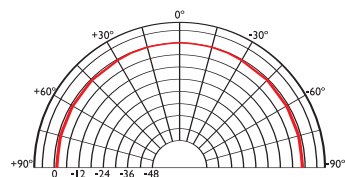
Ci200.3QT

Installation

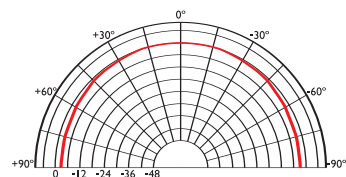


Polar Graphs

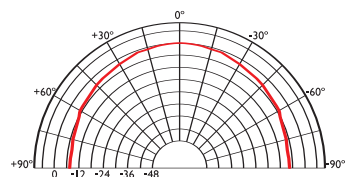
500Hz



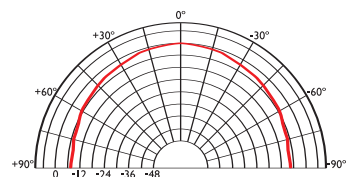
1kHz



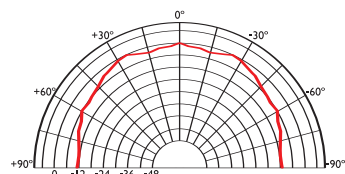
2kHz



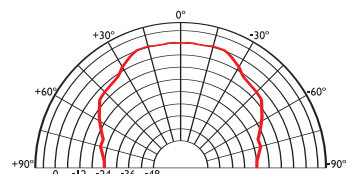
4kHz



8kHz



16kHz



Architectural specifications:

The Ci Series Ci200.3QT is best suited where high quality music and speech reinforcement applications require hi-fi performance such as:

- Multi Room systems.
- Home Theatre systems.
- Lounges, Bars, Boutiques.

- Boardrooms & Offices.
- Airports, Convention Centres, Hotels.
- Live Theatre/Concert Hall fill-in.
- Houses of Worship.
- Sports Arenas.

Specifications

nominale Impedanz	6 Ω (min. 3,9 Ω)
Drive unit	2 way, 200mm (8") Uni-Q array with 25mm (1") aluminium dome HF
Empfindlichkeit (2,83v bei 1m) 89 dB	
effektiver Frequenzgang	43 Hz - 20 kHz
empf. Verstärkerleistung	10 - 100 W
Übergangsfrequenz	1,8 kHz
Gehäusematerial	ABS

Gewicht	5,55 kg
Maße (H x B x T)	381 x 279 x 210 mm
Ausschnittmaße	363 x 260 x 200 mm
Befestigung	Metallrahmen mit Gehäuseabdeckung
Anschlüsse	Anschlüsse für bis zu 2,5 Kabeldurchmesser