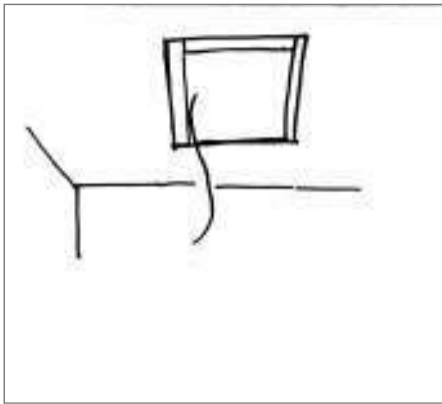


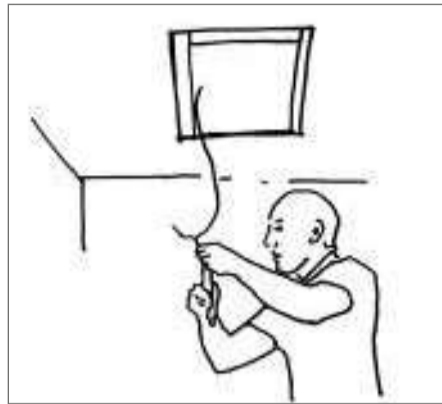
Installation instructions

- cerasonar reference series

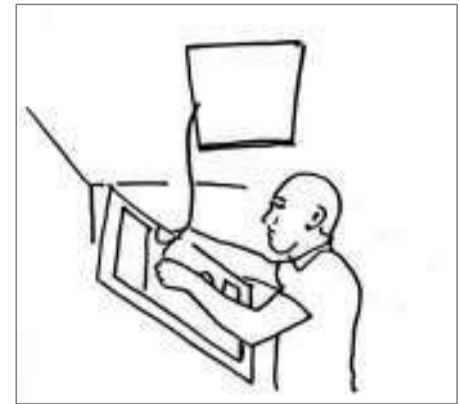
cerasonar
invisible speakers



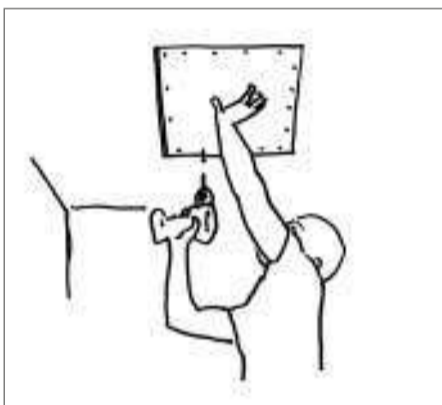
Check the construction for vibration noise, make sure the cavity has proper insulation. Prepare the wall or ceiling to fit in the speaker.



Strip the wire by 10 mm

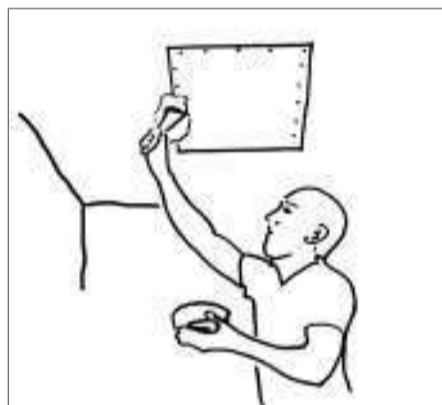


Connect the speaker cable to the speaker, be aware of the polarity

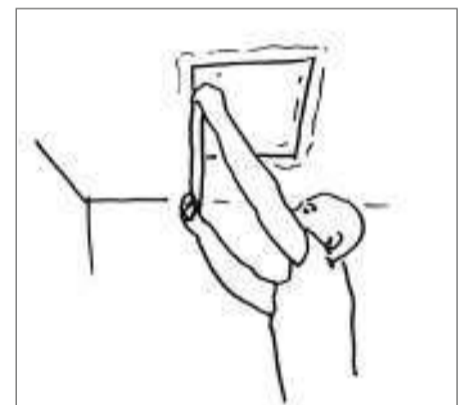


Insert the speaker, make sure there is no strain between the underlying insulation and speaker. Screw through all pre-drilled holes. The heads of the screws should penetrate about 1 mm into the panel material.

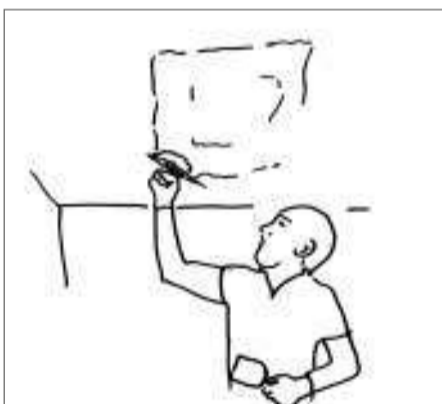
ATTENTION: Test the speaker!



Fill in plaster, we recommend to use a flexible filler, e.g. Knauf Uniflott or Ardex 828



Use mesh tape in the plastering process.



Up to 2mm of plaster can be applied, thus, Q3 and Q4 wall / ceiling quality levels are easily possible.

ATTENTION: Before using the speaker, let the plaster dry off

More information about the installation process in our FAQ section.

cerasonar connection mono

cerasonar connection single-stereo

